



# AQUATECH - ERP

Customised Software – End to End Solutions



**P&G ENTERPRISE  
SOFTWARE SERVICES**

**Version – AP.01.18**



# Privacy with User Access Rights




---

CLIENT-SERVER  
ARCHITECTURE

---

TRAILS ALL THE  
AUDIT DETAILS

---

MODULAR  
PRIVACY

# Why ERP?



MEETS THE  
REQUIREMENT OF  
THE BUSINESS



INCREASES THE  
PRODUCTIVITY OF  
THE BUSINESS



EASY TO USE



## Information is accessible on finger tips



---

**MULTI DIMENSIONAL  
REPORTING**

---

**CUSTOM REAL-TIME  
REPORTS**

---

**TRACK YOUR  
BUSINESS**





## P&G - ERP

An integrated and comprehensive solution to manage entire organisation operational requirements

- Fully Integrated Solution with latest technology
- Prospect Management Information Systems (MIS)
- Procurement Management (PM / SCM)
- Inventory Management
- HRM
- Processing & QC Management
- Sales / Customer Relation Management - CRM
- Costing
- Asset Management
- Financial Management
- Integration of Statutory records (GST, PF, ESI, PT)
- Web Technology
- Mobile Technology & configuration
- Complete Security
- Secured Backup
- Multiple users
- End to End solutions & Customised Software

### Businesses **With** Enterprise Systems



# ORGANISATIONAL DIFFICULTIES

Today many applications are available in silos to cater to the need of the organisation but unfortunately most of these solutions run standalone and information comes in bits and pieces.

- Lack of Integration
- Lack in data Integration
- Low transparency
- Low reliability
- Replication need to be done manually
- Non-Centralized resulting in Issues related to Architectural distribution





# P&G - ERP TECHNOLOGY

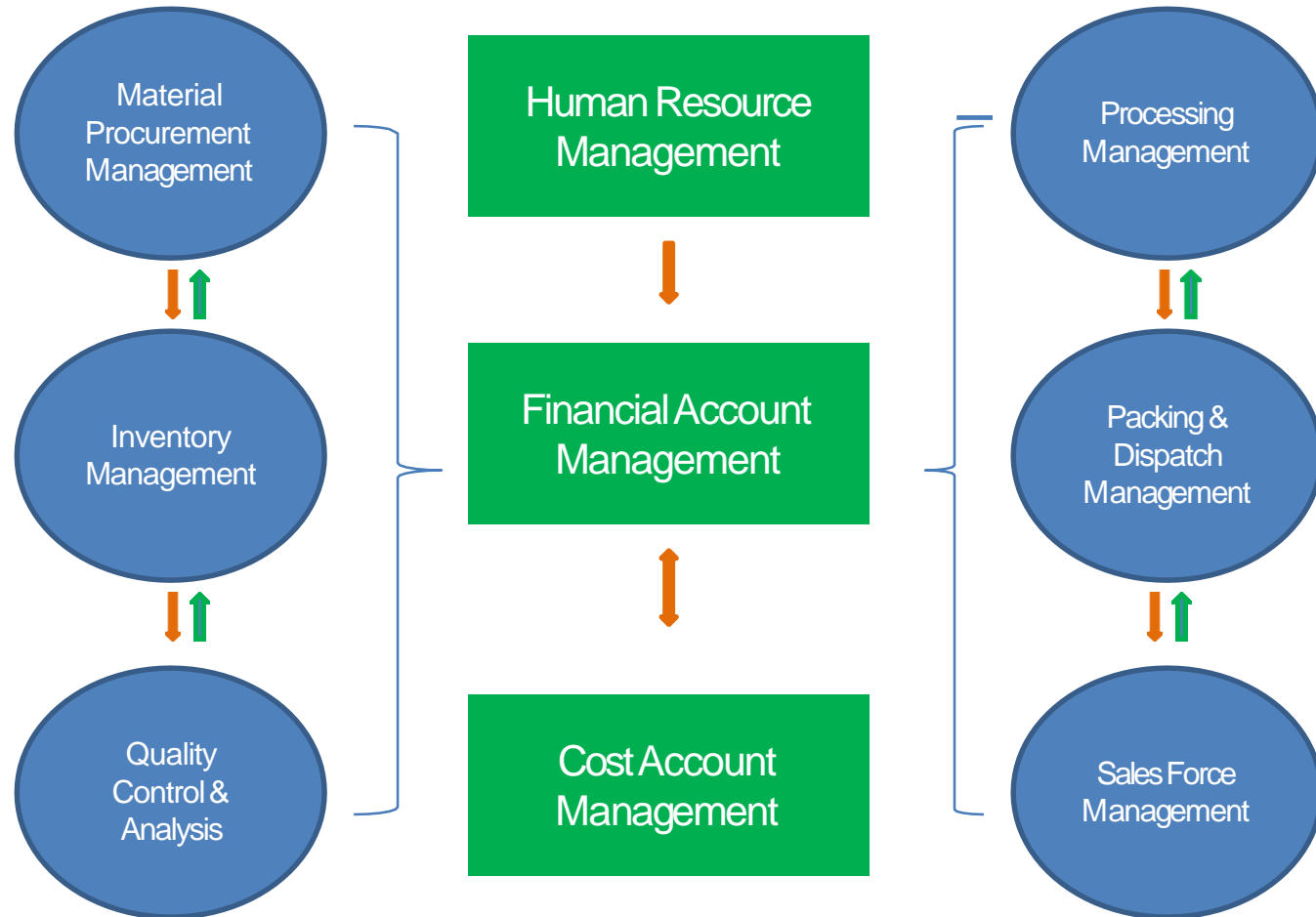
- Microsoft Software - .Net, Java, SQL latest tech.
- New Three-tier Architecture & MVC
- New Reporting functionality
- Web services with secured system
- Mobile Apps
- System Study with overall integration
- Design & Development
- Implementation & perfect training
- Quality maintenance & complete support
- Global access privileges





# P&G - ERP

## MATERIAL MANAGEMENT (SCM)







- 
- A word cloud centered around the phrase "Supply Chain Management". The words are arranged in a circular pattern, with "Supply Chain Management" being the largest and most central. Other prominent words include "customer", "products", "warehouse", "production", "logistics", "suppliers", "purchasing", "inventory", "transportation", "materials", "orders", "manufactured", "delivered", "sales", "cost", "level", "raw", "decisions", "operational", "companies", "received", "specific", "focus", "plan", "purchase", "planning", "department", "company", "production", "department", "raw", "decisions", "operational", "companies", "received", "specific", "focus", "plan", "purchase", "planning", "department", "company", "production", "department". The words are in various colors (blue, orange, green, yellow, red) and sizes, creating a dynamic and visually appealing composition.



# P&G ESS - ERP

## INVENTORY MANAGEMENT (IM)

- Batch wise stocks (Purchased – Received)
- Stock position, Locations and Condition
- Reorder and Minimum Stock levels
- Freezer / Cold Storage unit wise Stocks
- Online Indent receipt, Stock check & Issues
- Consumption history (Material wise / Product wise / Vendor wise)
- Raw / Cooked / Blanched stocks
- Variety / Grade / Count wise Stocks
- Blocks / IQF Stocks (Batch wise)
- Indent Issues to Purchase department
- Consumption Valuation – Weighted average / FIFO / LIFO / Against Lot
- Ledgers–Summary / Material wise / Subsidiary
- Stock report options (FIFO / LIFO) & batch wise
- Stock adjustment – (Debit / Credit Note)
- Customised MIS reports



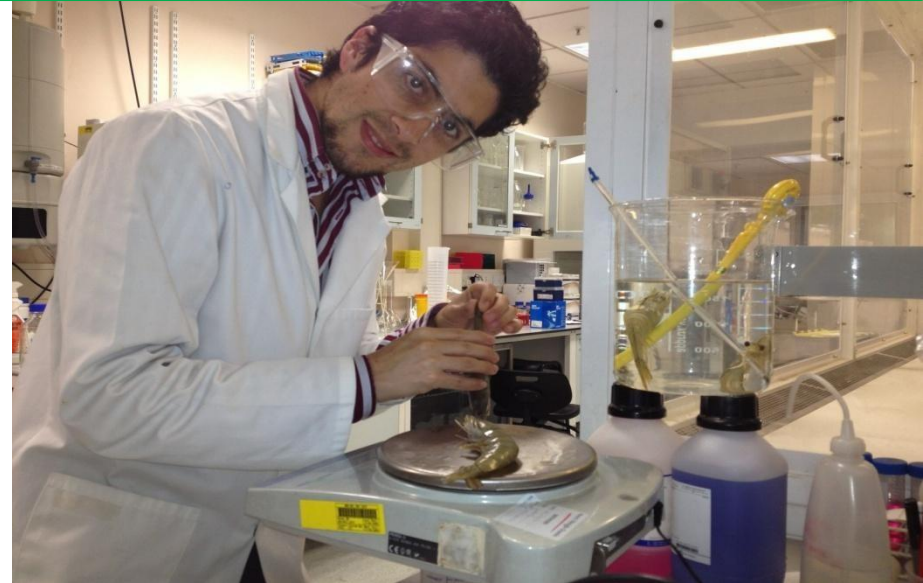




# P&G ESS - ERP

## QUALITY CONTROL MANAGEMENT

- Quality Procedures & Operations as per Aqua practices
- Quality testing for Inward, Intermediate, Final Products
- Integrated documentation - Receipt & Results
- Manuals & SOP as per HACCP / ISO - 22000, GMP, etc
- Tolerance Limits, Characteristics, methods...
- Measurement – Count / Variety / Grade
- Employee wise testing report
- Material / Product wise analysis details
- Quality Certification & Annexure integration with Invoice / Dispatch challan
- Material / Process Quality failures history
- Q & A periodical MIS
- Customised MIS reports





# P&G ESS - ERP

## PRODUCTION & PLANNING MANAGEMENT (PPM)

- Process design for each Product
- Batch wise processing as per Standards
- Pre processing (Beheading) – Quantity details
- Processing – Block / IQF direct / as per Sales Order
- Production planning integrating with Sales Order
- Daily Production monitoring
- Shift wise man power details, job description & history
- Daily & Periodical production – Capacity details
- Production Process ( Beheading, Grading, Valuation, Freezing, Storage - Qty automation with weighment and sticker / barcode print machines)
- Daily log sheet including parameters (temp, moist, etc)
- Input to Output quantitative balancing & analyzing (including head losses, count variance etc)
- Direct integration of Q & A for any sample issues
- Work in Process stocks at all processing stages, etc







# P&G ESS - ERP

## PACKING & DESPATCH MANAGEMENT (PDM)

- Storage / Batch wise finished stocks
- Checking Stock availability & scheduling for dispatch
- Indent to Production department required products
- Product movements & Status
- Packing material – Stock maintenance
- Delivery and freight details
- Invoicing – Commercial / Excise / Export
- Excise records, including annexure maintenance
- Finished Stock records – Summary / Product wise
- Dispatch records and Details
- Export documentation (Agents, shipment dealers, etc)
- Insurance documentation
- Sales records – Summary / Product wise / Customer wise
- Customised MIS reports







## P&G ESS - ERP

# CUSTOMER RELATION MANAGEMENT (CRM)

- Execution of targeted Marketing campaigns
- Maintaining Customer Data & Relations
- Providing Product Information, request from customers
- User friendly mechanism for Customers for Enquiry, Sales processing, complaints, tracking, suggestions, etc...
- Sale on Sale process with Customers and their needs
- Automation of Product listing to market
- Marketing automation, Perfectly tracking Sales Team & their schedules
- Customer follow up, sales, service, support, retaining, understanding their existing & new needs
- Periodical Sales tracking, to reach defined targets
- Global accessing system
- Integration with social blogs to acquire new customers
- Developing end to end process to serve customers
- Customised MIS reports





# P&G ESS - ERP

## CUSTOMER RELATION MANAGEMENT (CRM)

- Total Man Power Management
- Employee History & Details
- Department & Designation
- Attendance Automation with biometric device
- Payroll, leave status, loans & advances, deductions...
- Employee State Insurance Corp (ESIC)
- Provident Fund (PF)
- Professional Tax (PT)
- Wage Register
- Statutory Records
- Salaries TDS
- Increment Processing ( 180 / 360 degrees)
- Data Export for Online filings
- Customised reports as per requirement





# P&G ESS - ERP

## HUMAN RESOURCE MANAGEMENT

- Complete Integration with all the departments
- Avoiding duplication of entries
- Approvals & Security authentication before passing to financial records
- Instant generation of all financial reports – Balance sheet, Profit & Loss, Trail Balance, General Ledger, Subsidiary Ledgers, etc
- Setting of yearly & monthly budgeting
- Comparison of actual performance with budgeted – for any period
- Vouchers print for Payments, Receipts, Credit Note, Debit Note, Journals
- Cheque print linked with voucher generation
- Complete of GST records, monthly returns
- Integration of complete Excise records, Returns
- Funds Flow, Cash Flow, Financial reports, MIS Reports, BRS, Depreciation as per acts, etc



# P&G ESS - ERP

## FINANCE MANAGEMENT (FM)

- Perfect System designing
- Cost Centers & sub divisions
- Integration of total expenses with cost codes
- Process wise & Product wise cost statements
- Input & Output realization with process loss
- Plant capacity & Utilization
- Comparative costing of a Product or Process for any period
- Cost controls & minimizing process losses
- Profit / Loss realization of each Product
- Comparing with Budgeted & Actual Costing
- Grade / Variety / Count wise Costing
- Shipment / Order wise net profit/loss records
- Customised MIS reports







## ***GROW YOUR BUSINESS @ P&GERP***

- We provide specialized and industry specific, customized, high quality & cost effective ERP software solutions, to cater to the vast and diverse needs of companies that want to grow and improve upon their decision making capabilities and hence achieve their business goals better, faster and cheaper
- Perfect systemized & secured data base management
- User wise privileges & authentications
- Globally & Web based technology
- Our ERP software will be the major tool for the growth of your organisation

A woman with long dark hair, wearing a white shirt, stands with her arms raised in a gesture of achievement or aspiration against a clear blue sky and a green field.

REACH YOUR  
EXPECTATIONS

***P&G ENTERPRISE SOFTWARE SERVICES***

[info@pg-ess.com](mailto:info@pg-ess.com)

[www.pg-ess.com](http://www.pg-ess.com)